



territory

this land is your land



special places, people and events ~ brought to you by Nevada Land Trust

Spring 2015 · Volume 17 · Issue 1

Finding Balance in Churchill Canyon

by Alicia Reban & Chuck Pope

The Bi-State Sage Grouse population is genetically unique, occurring only in an area approximately 170 miles long by 60 miles wide, from just below Carson City in the Pine Nut Range to the White Mountains straddling the California-Nevada state line. A map of the Bi-State population's range shows an area determined by the Nevada Department of Wildlife to be "essential and irreplaceable" sage grouse habitat - and in the very heart of that habitat is Dick Huntsberger's 40 acres in Churchill Canyon.

Dick is a self-described "working cowboy" who's been involved in ranching since the early 1970's. He has been running cattle on the Churchill Canyon property and on his grazing allotment on adjacent Bureau of Land Management property from fall through early spring since 1993. After his season closes, the sage grouse brood-rearing takes place. The birds are attracted to the balance of sagebrush, meadow, and springs that are found here, which create the perfect place for hens to raise their young.

"The way I see it, if the land and the sage grouse are healthy and doing well, I know my cattle are doing well. I need to do my part, like maintaining water resources for both cattle and wildlife, and putting this easement on my land," said Huntsberger. Nevada Land Trust has been working closely with Dick and his wife Linda to create a conservation easement on their 40 acres, to ensure that the property is forever available to the sage grouse that depend on it.

continued on page 3...

OFFICERS

Reed Simmons, Chair
Karen Ross, Vice Chair
Karen Mullen-Ehly, Secretary
Harry Parsons, Treasurer

TRUSTEES

Brian Bonnenfant
Candace Evart
Jim Greil
Ginnie Kersey
Deborah Lassiter
Tina Nappe
Katy Simon Holland
Trent Schmidt
Don Wilkerson

ADVISORY BOARD

Nazir Ansari
Stephen Ascuaga
Alice Baldrice
Chris Barrett
David Bobzien
Jack Byrom
Jean Carbon
Joe Crowley
Stacey Crowley
Darrel Cruz
Frankie Sue Del Papa
Craig Etem
John Hester
Steve James
Debbie Leonard
John McLain
Tina Miller
Willie Molini
David E. Moore
Ron Parsons
Caryn Swobe
William Thornton
Jack Trainor
Sue Wagner
Bill Watson
Brad Woodring
Gregg Zive

STAFF

Alicia Reban & Chuck Pope
Co-Executive Directors
Sonya Giroux,
Operations & Finance Director
Patricia McCleary,
Special Projects Director
Sarah McNeal,
Operations & Accreditation
Coordinator
Ela Zawadzka,
Communications &
Development Coordinator
Lynda Nelson,
Acting Projects Director
Taylor Gipe,
Project/GIS Coordinator

Thoughts from the Executive Branch

by Alicia Reban



I've been immersed in the mid-1800's lately, preparing to chaperone my daughter's class trip to Sutter's Fort in California. I've taken the kids out to walk remaining wagon ruts in nearby hills, sewn burlap sacks for provisions, and shared what I know of cultural history in the West. The emigrants formed large parties to tackle the California Trail together - and it is in that spirit that I salute some very special people who are part of the Nevada Land Trust journey:

First, my hat's off to immediate past board chair Karen Ross, who has led the board admirably and energetically these past two years - through national accreditation, several key acquisitions (including her personal favorite up in Tahoe Meadows), and the transition to a new culture of philanthropy at NLT. Karen remains an active member of the board, focusing on strategic planning, board development, fundraising, and communications.

Hats off also to Tracy Visher, the extraordinary woman who came to NLT three years ago to help shepherd our fire restoration work - and ended up creating a robust grants tracking and contract management system. Many of you know Tracy from presenting the Banff Mountain Film Festival since 2013 and the Art of Conservation. Tracy shared her private sector experience to help us become better at the "business" of conservation.

A hearty welcome to our new Trustees: Don Wilkerson, returning to NLT's Board after a few years away. We're glad to have Don's appraising, property management, and real estate expertise back on board. Elko native Deborah Lassiter has just joined us, and her background in resource management, mining, and philanthropy is particularly relevant now. Debbie is joined by Brian Bonnenfant, whose economic forecasting, demographic analysis, and GIS mapping work at the SBDC/Center for Regional Studies at UNR gives him a unique perspective. All three share the Board's sense of responsibility to ensure that as our communities grow, the balance between the natural world and the developed world is maintained and the places we love are protected. Debbie Leonard and Steve James have stepped from the Board of Trustees to the Advisory Board, where our mission will continue to benefit from their extraordinary legal (Debbie) and creative (Steve) skills.

Next, hats off to Nevada's leadership in Washington. I helped with the effort to bring back the Conservation Easement Tax Incentive. We almost made it in late 2014 with support from 100% of Nevada's Congressional delegation and a valiant push by Senator Reid. We're beyond pleased that Nevada's own Senator Heller is leading the charge for 2015! The measure is supported by land trusts, hunters, anglers, ranchers, and others across the country. Reauthorization will make it possible for more ranching families and other landowners to participate in conservation easements.

Finally, a big hats off to ALL NLT donors, partners, volunteers - and other lovers of nature, wildlife, trails, rivers, regional parks, and Nevada history for helping us in 2014 and into the new year. We couldn't do what we do without YOU. Thanks so much!

Alicia

Front page photo: Churchill Canyon, by C. Pope

territory is printed semi annually by Nevada Land Trust. Issue Date: Spring 2015
P.O. Box 20288, Reno, NV 89515 Phone 775.851.5180 / Fax 775.851.5182
www.nevadalandtrust.org and info@nevadalandtrust.org
Go paperless, sign up for e-Newsletter at info@nevadalandtrust.org

Nevada Land Trust is a 501 (c)(3) tax-exempt organization, IRS Section 509 (a) (1) and (170) (b) (1) (A) (VI) for both federal and state tax purposes. Our federal tax identification number is 88-0287591. Your contribution may qualify as a federally recognized tax deduction.



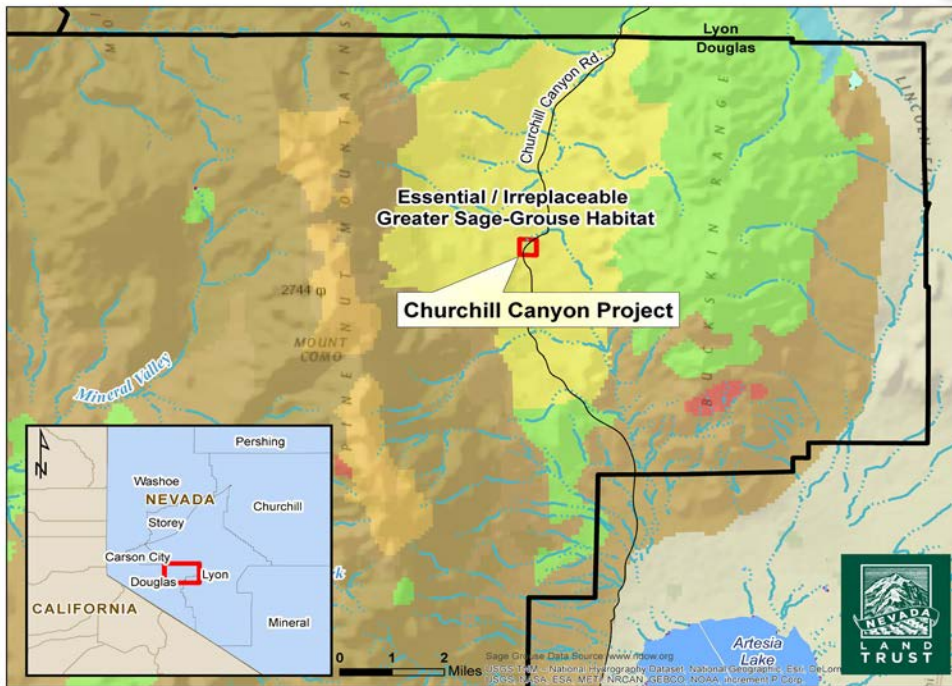
Funding commitments are in place for the purchase of the easement and other project costs from the Agricultural Land Easement program of the Natural Resources Conservation Service, Nevada Department of Wildlife, with matching funds from the NV Energy Foundation.
“I’m able to re-invest in my ranching operations,” said Huntsberger, “and

that’s important for my business. I’m not a huge part of the economy, but ranchers like us are still a important part because so many people depend on what we do,” he added. – AR/CP

To learn more about Nevada Land Trust’s conservation easement program, please visit our website at www.nevadalandtrust.org, or call (775) 851-5180 to speak with project staff.



Sage Grouse, Jeannie Stafford USFWS



What is a conservation easement?

A “conservation easement” is a legal agreement between a landowner and a land trust or government agency that permanently limits uses of the land in order to protect its conservation values. It allows landowners to continue to own and use their land, and they can also sell it or pass it on to heirs. - Land Trust Alliance, www.lta.org



Tahoe Meadows Dedication

Nevada Land Trust, donors, agency partners, and other friends gathered September 26, 2014 to celebrate our protection of the last private parcel in the Tahoe Meadows.

Photo: T. Gipe.

Alum Creek Water Quality Improvement Project

by Lynda S. Nelson

We all know water is important, but clean water is truly key. Since 80% of the drinking water in the Truckee Meadows comes from the Truckee River it's only natural to look at what's ending up in it. Alum Creek is an intermittent stream that originates in the Sierra Nevada foothills in southwest Reno, flowing through the Caughlin Ranch neighborhood and into the Truckee River at Chrissie Caughlin Park near Mayberry Drive and McCarran Blvd.

Through previous monitoring efforts completed by Professor Mark Walker and his UNR Students, the creek was identified by state and federal agencies as an "impaired" waterway in Nevada. Alum Creek was included on the state's official list because it did not meet standards for E. coli, water temperature, sediment, and phosphorus from fertilizers.

Nevada Land Trust has partnered with the Caughlin Ranch Homeowners Association to identify the sources of the pollutants and develop ways to address them. NLT and the Association contracted with JBR/Stantec to conduct water sampling during 2014 at 10 sites along three portions of the Alum Creek drainage as well as one site located above the Steamboat Ditch in the upper watershed. The sites were strategically selected to better understand the sources of pollution.

Findings indicate that most sediment is coming through the western portion of the watershed. Nevada Land Trust will be working with the Caughlin Ranch HOA (CRHOA) in the spring of 2015 to install willow structures, and stakes filtering trenches, and riprap to stabilize banks and pond edges to cut down on the sediment flowing into Alum Creek.

High phosphorus levels, which can cause algae to grow faster than an ecosystem can handle, are more prevalent in the eastern watershed. Too much algae reduces oxygen levels required by fish and other aquatic life. NLT and CRHOA will be working on a community outreach program through the Caughlin Rancher newsletter, workshops, and door hangers to share information about low-impact fertilizer choices and ways to minimize stream impacts when feeding grass and other plants. The program also calls for stenciling storm drains to reinforce the neighborhood's direct connection to the Truckee River.

We very much appreciate our partnership with the Caughlin Ranch Homeowners Association, the University of Nevada Reno, Mark Walker and Ruth Galt's UNR microbiology class, JBR/Stantec, our Alum Creek Stakeholder Committee, City of Reno and the Nevada Division of Environmental Protection. This project was made possible through a generous grant from the Truckee River Fund at the Community Foundation of Western Nevada.

To obtain a full copy of the JBR/Stantec report, please call me at (775) 851-5180 or e-mail: l.nelson@nevadalandtrust.org.



NLT Achieves National Accreditation

by Sonya Giroux



Nevada Land Trust was awarded national accreditation by the Land Trust Accreditation Commission in late February, becoming one of only 301 accredited land trusts out of the 1,700 in existence across the country. NLT is also the first independent land trust to receive accreditation in the state of Nevada.

The Land Trust Accreditation Commission was incorporated in 2006 as an independent program of the Land Trust Alliance (LTA) to build and recognize strong land trusts, foster public confidence in land conservation and help ensure the long-term protection of land. LTA is the national organization for land trusts, promoting voluntary private land conservation to benefit communities and natural systems.

The accreditation program recognizes land conservation organizations that meet national quality standards for protecting important natural places and working lands forever. Nevada Land Trust has been preparing for accreditation since 2011, undergoing a rigorous review of policies, fine tuning and streamlining operations, and implementing LTA's Land Trust Standards and Practices. NLT submitted our final application in December 2014.



Banff Festival Treks Downtown

by Ela Zawadzka

You say you've never rowed across the Indian Ocean or surfed in Antarctica? Well, you can at least live these adventures vicariously through the amazing short films presented at the Banff Mountain Film Festival World Tour! On Thursday, April 2nd at 7 p.m., at the Pioneer Center for the Performing Arts, Nevada Land Trust will host the 14th year of this outstanding international, award winning selection of outdoor films. Film makers from the USA, Canada, South Africa, Austria, Sweden, the UK and France will share their stories, from the exploration of remote landscapes and mountain cultures to adrenaline-fueled action sports. Films in this year's world tour are sure to captivate and amaze the explorer within you.

A wide range of films are screened on this international tour – from 5-minute shorts to feature-length films, including many premieres. Over 300 films are entered into the Banff Mountain Film Competition each year, and the best are screened to the public during the Festival.

Nevada Land Trust has hosted the Truckee Meadows festival stop for thirteen consecutive years, and the event has sold out every year! This year, NLT has moved to a new, bigger venue – the Pioneer Center for the Performing Arts in downtown Reno, with seating for 1,500 outdoor enthusiasts and film buffs. Doors open at 6:00 p.m. with films starting at 7:00 p.m.

This is NLT's largest annual fundraiser and proceeds support our mission to protect and preserve the special places and open spaces in Nevada.

Tickets are \$22 in advance through the Pioneer Center Box Office (100 South Virginia Street or 686-6600) or REI (2225 Harvard Way) and \$27 the day of the event. Online ticket purchases through the Pioneer Center Box Office have an additional surcharge. And remember to bring cash if you'd like a beverage during the event – the bar is cash only! See you on April 2!

Pictures above: from the previous Banff Mountain Film Festival Tours



David Lama climbing Cerro Torre
© Lincoln-Else-RedBullContentPool



© Into the Empty Quarter, Alastair Humphreys



© WildWomen FaithDickey, Wojtek Kozakiewicz



© Just Keep Running, Shaun Collins

2015 Banff Mountain Festival Local Sponsors:



an insider with an outside view: Reed Simmons

Part of a regular series of interviews with NLT board, staff and friends

by Ela Zawadzka

Ela Zawadzka: What's your story, Reed?

Reed Simmons: I was raised on a ranch with a 2 mile-long stretch of river and a thousand acres of BLM land out my back door. My appreciation for open space started early, when I was a kid, probably no more than 13 years old, when I spent most of my days riding horses.

I came to Reno in 1980 and started to work in real-estate two years later. For eight years I was working so hard, I didn't do much of anything else. But my roots were strong enough that I started to get outdoors more often. In 2004 I became president of EDAWN (Economic Development Authority of Western Nevada). Those years were really high growth years in Reno and a lot of land was being purchased for construction. One day in 2005, at a strategic planning meeting in my house, we asked ourselves some critical questions: What are we doing? Did we do our job so well that we don't even want to live here anymore? And we decided we have to change something. We knew we can't stop growing completely because a community that doesn't grow is a dead community, but we could grow smarter.

E: So you think that conservation is good for business?

R: Of course! A healthy community is one that can grow. You have to decide what space has to be developed and what land will always stay open. You have to find a balance. Quality of life is what brings people here. Open space that you see and benefit from every single day is why people want to move here.

E: What's "job one" for you as new NLT board chair?

R: My goal as a chair is to put more emphasis on donor development for two reasons: one, to raise funds, and two, to get our story out. Both are critical to

conservation success. Nine out of ten people can relate to open space. We need to reach out in different ways about what we do and get all of those people on board to help us. It has to become second nature to tell the story to the right people, and do it better.

E: So what's the story you want to share?

R: Land conservation really affects us all. People may not know about our work even if they enjoy hiking or riding horses on the lands that we've protected. And we need to change that. We need to tell them what we've done and ask for their support. Sometimes people don't



Reed and Mary Simmons, photo by Jeff Ross

appreciate open space until suddenly it's gone and then it's too late. We need to stay ahead of that curve.

E: Any secrets for the rest of us?

R: I live a pretty balanced life. I make time for the things that are important, like the mission of Nevada Land Trust. I've learned how to adjust my schedule and I take time to do things that I like. I guarantee that to this day, if I'm not working, you can bet that I'm outdoors!

Reed Simmons is the newly-elected Board Chair of Nevada Land Trust. He is Vice President in the Multi-Family, Office Leasing, Sales & Leasing division of Avison Young. Reed makes time for swimming, competitive team roping, riding horses, and attending the Cowboy Poetry Gathering in Elko with his wife Mary.

the giving tree

Thank You to our Donors



September 16, 2014-
February 14, 2015

Anonymous
Anne Amaral
Valerie Andersen
Thomas & Judith Anderson
Jeanette Belz
Chris Benna
Karen Boeger
Bill Bowers
Richmond Breen
Laura Brigham & Brian Beffort
John & Lisa Brockmann
Jane Burnham
Carol Burns
Michael W. Cameron & Christine Stitser
Jean & D.J. Carbon
Carolyn & Paul Chimits
Jack & Carol Christensen
Richard & Alexandra Cooper
Lenore A. Cornille
Holly Coughlin
Douglas Cox
Diane Crowne
Anthony & Rebecca Czarnik
Karen Dearthmont
Frankie Sue Del Papa
Mark & Maria Denzler
Greg Doyle
Becky J. Draney
Michael Drews
Robert & Ellen Driscoll
Julie Dudley
Anne M. Elliott
George Peek
Chris Fairchild
Pat Ferraro Klos
Denton & Patricia Gehr
Jim & Lou Greil
Fred W. Greve & Joyce L. Komura

Jeff & Marna Griffin
Thomas J. Hall
Dan Hamilton
MaryAnne Hawkins
Michael & Karolyn Hirsch
Nancy Hoffmann & Bruce Casler
John Houk
James & Betty Hulse
Daniel & Yong Inouye
Bill & Beth Isaef
Roger & Ellen Jacobson
Stephen & Katherine Jenkins
Yvonne Jerome
William & Mary Keenan
Arlene Kramer
Dorothy Learey
Debbie & Todd Leonard
Samuel Limerick & Gayle Haraguchi
Richard & Carolyn Lisle
Jeff & Denise Lock
Marguerite Lowe & James Leonhardt
Bill & C. Lynn Macaulay
Jon & Linda Madsen
Sharon Ann Maginnis
Robert & Nanette Marshall
Thomas & Christi Marshall
Cheryl McLemore
Dr. James Megquier
Chris & Diane Miller
Jeff & Karen Miner
Andrea Minor
Willie Molini
Wayne & Gaye L. Momerak
David & Roberta Moore
Pierre & Ethnea Mousset-Jones
Karen Mullen-Ehly & Ray Ehly
Tina Nappe
Margaret & John R. Nazy
Lucille Newby

Nevada All State Trail Riders, INC.
Terrance & Linda Oliver
Edward & Marie Parco
Harry Parsons
Reese & Joanne Perkins
Sandie Peroglio
Carol Perry
Chuck & Marilyn Pope
Lonnie & Lynn Ramsey
Alicia Reban & John Sherman
Milan Reban
Warren & Diane Ronsheimer
Russ & Julie Ruiz
Bob & Marilyn Rusk
Brent Ryman & Erin Rasmusson
Trent & Julie Schmidt
David Schweer & Cheryl Lloyd
Ted Short
Stanley & Neila Shumaker
Reed & Mary Simmons
Lois Snedden
Dodi Stout
Lloyd Stradley
Rose Strickland & Dennis Ghiglieri
Jane Sunday
Caron Tayloe & Randall Bradley
Linda Thompson
Michael & Margaret Tippet
Ken Todd
Michael & Karen Traynor
Jeanne Tribble
Micheale Tristram
Alfred & Rita Truelove
David VonSeggern
Sue Wagner
Cameron Warren & Susan Kemper

Washoe Zephyr Chapter DAR
Margret Byerly
Bob & Lone Webb
Steep & Maxine Weiss
Ursula Wellman
Mike Widmer
Lori & Mark Wray
Donald & Dorothy Zito
In memory of Tom and Patty Cooke:
Kathleen Cooke
In memory of Bob Kersey:
Ginnie Kersey
In memory of Annaliese Odencrantz:
Dianne Drinkwater
In Honor of Dave & Roberta Moore:
Marge Sill

Foundations:
Amazon Smile Foundation
HAWS Corporation
NV Energy Foundation
Truckee River Fund
Phil & Jennifer Satre Family Charitable Fund at the Community Foundation of Western Nevada
The Crystal Family Foundation
Vanguard Charitable Trust
In-Kind:
Lionel, Sawyer and Collins, Attorneys at Law
Mac-o-rama
Pangborn and Company
Washoe County





P.O. Box 20288
Reno, NV 89515

CHANGE SERVICE REQUESTED

NON-PROFIT
US POSTAGE
PAID
PERMIT #364
RENO, NV



going places

*see what's next on the horizon
for the Nevada Land Trust*

04.02.2015 Banff Mountain Film Festival

After many years in John Ascuaga's Nugget, we are excited to be moving the event to a new location. Watch for your invitation and join us April 2nd at the Pioneer Center in downtown Reno. Tickets are on sale now - see story on page 5 for details.

05.02.2015 Great Community Cleanup presented by KTMB

Join NLT volunteers to care for wetlands near Silver Lake off Red Rock Road north of Reno. Register by calling KTMB at 775-851-5185 or visit ktmb.org for details. Come early for birdwatching!

07.24-25.2015 Open Spaces and Special Places: The Art of Conservation

This benefit event for Nevada Land Trust will be held July 24-25, at the Unitarian Universalist Fellowship of Northern Nevada, 780 Del Monte Lane, Reno, NV. Please join us for Friday evening's opening reception!

